

printing future



For the Creators

Océ ColorWave® 3000 series



Rock-solid wide format printing with unparalleled ease of use

Based on 10 years of proven technology, the Océ ColorWave 3000 series is the ideal flexible choice for the corporate and commercial print markets. The easy to use, low-maintenance printing system is capable of printing a wide application range with minimal operator intervention. For reprographers and corporate customers specialised in technical documents and maps, the Océ ColorWave 3000 series offers uncompromising quality in crisp, correct printouts.



A joy to work with



Confidently meets your high standards



The flexible choice for your business, now and in the future

Océ ColorWave 3000 series.

The Océ ColorWave 3000 series comes in two models: The Océ ColorWave 3500 for worry free walk up printing, while the Océ ColorWave 3700 targets customers requiring higher media capacity and media versatility.

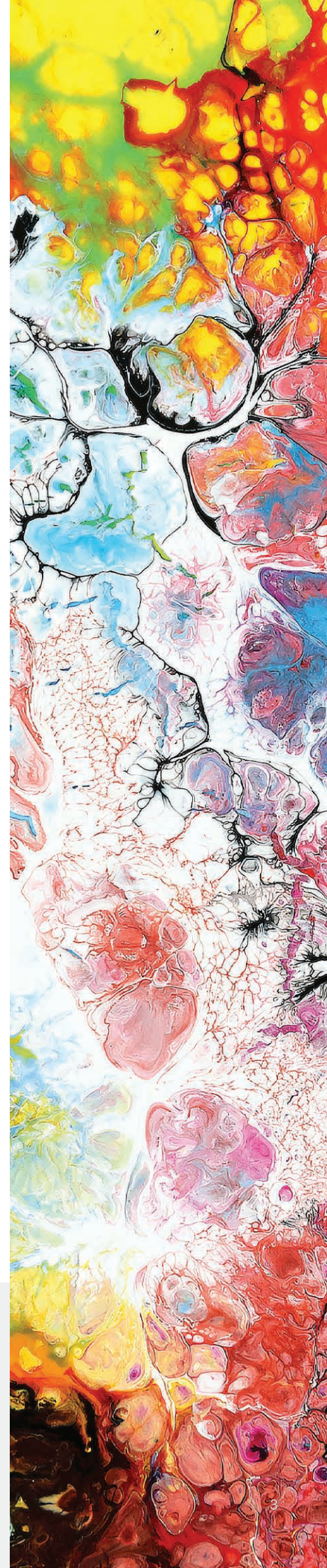


Océ ColorWave 3500



Océ ColorWave 3700

- Unparalleled ease of use
- Packed with smart innovations that save money and time
- High-quality prints on a wide range of media, even uncoated paper
- The flexible choice for rock-solid technical documents and high quality graphic applications
- Versatile, high-quality print output
- Excellent workflow integration software





1 A Joy to work with

- **Manage complex jobs and avoid misprints** with the intuitive Clear Connect software suite & user interface and support of multiple driver software applications.
- **Experience true green button printing:** the right print settings for excellent print output with minimal operator intervention.
- **Enjoy ergonomic operator access** with the rotatable user interface to control and flexible print collection. Easily collect your prints from top delivery tray or finishing device.
- **Powerful secure POWERSync controller** for lightning fast job submission.

2 Better copy and colour scanning results

- **Intuitively print, copy and scan on one system** using the seamlessly integrated Scanner Express for effortless and timesaving operation.
- **Turn imperfect originals into perfect copies and scans** with Océ Image Logic scanning technology.
- **Easily implement** the Océ ColorWave 3000 series into your graphic arts workflow through its Onyx Support.

3 Handle incoming jobs with ease and confidence

- **Enjoy convenient, fast and reliable** multitasking with the secure POWERSync controller (running on Windows 10 IoT Enterprise OS).

4 Productively mix applications and run large jobs

- **Gain media capacity and application diversity** with up to 6¹ rolls, 42-inch width and 200 meters total length.
- **Save operator time** on media handling with the easy roll replacement, automatic roll width detection and easy paper feeding.

5 Confidently meets your high standards

- **Rely on rock-solid prints.** Océ TonerPearls technology are heated and then jetted onto the media with extreme precision, for crisp, instant dry, water resistant prints with no feathering. Get sharp lines, high readability, fine details and smooth, even area fills every time you print.
- **Reduce costs** with the Océ PAINT technology that automatically predicts and compensates for nozzle failure to prevent ruined prints.
- **Become more versatile.** Océ MediaSense technology² automatically adjusts the gap between the image device and media, for high-quality output on a wide range of media, from thin, uncoated paper to vinyl.
- **Full of mature technologies** to reduce costs and gain print quality.
- **Ready to serve for years.** High reliability and lifetime in a healthy work environment.

6 Ready to serve you for years and years

- **Enjoy a healthy work environment** thanks to the mature, non-toxic Océ TonerPearls technology: no fine dust, odour, ozone emissions & minimal waste.
- **Be eco friendly.** The ENERGY STAR certified low energy use machine is designed with long parts lifetime for remanufacturing and re-use by Océ, forerunners in circular economy. Océ CrystalPoint prints are suitable for recycling efforts thanks to high deinkability – the Océ TonerPearl toner lies on top of the paper for easier separation.

7 The flexible choice for your business, now and in the future

- **Get the complete package** with the fully integrated peripheral portfolio, perfectly tuned to the printer: The Océ Folder Express 3011, Folder Professional 6013 and Océ Stacker Select.
- **Rely on consistent print quality and high uptime** backed by an experienced service organisation. No daily maintenance is required and the machine uses few consumables.
- **Top of the range folders.** Océ Folder Express 3011 and Océ Folder Professional 6013.
- **High stacking capacity** with the Océ Stacker Select.
- **A wealth of applications** through versatile software and technologies.

^{1,2} Available exclusively with the Océ ColorWave 3700

A joy to work with

The Océ ColorWave 3000 series offers hassle-free quality in a convenient, cost-effective package. The Océ ColorWave 3000 series is built for productivity: chock full of smart, time-saving innovations and ease-of-use features that reduce misprints and saves operators valuable time.



Easy to use, in all ways

The Océ ColorWave 3000 series supports you in getting your prints out quickly and without worry. The ClearConnect software suite and user interface helps you to flexibly manage complex jobs and avoid misprints and delays. Easily submit jobs through the Océ Publisher Select application for What You See Is What You Print operation – no more preventable misprints thanks to an automatic preview. Multiple driver software applications, such as WPD2 and Postscript, are supported.

The Océ ColorWave 3000 offers true 'green-button printing' – smart automated functions and the right print settings for excellent print output with minimal operator intervention. Océ Print Assistant automatically suggests the right print mode for your job, media requirements are detected automatically and the printer switches to the right roll. The Océ Image Logic scanning technology turns imperfect originals into perfect copies and scans.



Handle incoming jobs with ease and confidence

The Océ ColorWave 3000 series has productivity levels you can count on. The powerful and reliable POWERSync controller gives you lightning-fast job submission, while you can still use the submission, driver and control software that fits the way you work. The printer is capable of handling peak volumes when the pressure is on, and supports productive multitasking.



Fits your workflow like a glove

With the Océ ColorWave 3000 series, you can rest assured of industry-standard security compliance – The secure POWERSync controller, running on Windows 10 IoT Enterprise OS, allows for convenient and fast job processing.



Ergonomic ease of use

The Océ ColorWave 3000 series increases productivity with its outstandingly easy and sustainable roll loading method, automated roll switching, automatic roll width detection and easy paper feeding. Always operate the printer from the most convenient position with the rotatable user interface. Collect your prints from the top delivery tray or the finishing device, depending on what is most comfortable.



Get the complete package

With the Océ ColorWave 3000 series, you invest in a machine that supports you wherever you need. Whether your focus is on CAD documents or shifting towards graphic arts, whether you are printing B&W or colour: this engine does it all. Do you need to scan and copy as well as print? The Océ Image Logic scanning technology turns imperfect originals into perfect copies and scans. The Océ Folder Express 3011, Océ Folder Professional 6013 and Océ Stacker Select provide a perfectly tuned print- to- finish solution. Combined with its large 6-roll media capacity, the Océ ColorWave 3000 series efficiently produces large format CAD drawings or graphical applications with minimal operator intervention.



A wealth of applications

The Océ ColorWave 3000 can print on a wide range of media, enabling a wide range of applications – from high-quality technical documents to full colour graphics. With a media capacity of up to 6 rolls, the Océ ColorWave 3700 model enables you to productively mix applications or to run large jobs without interruption. Additionally the Océ ColorWave 3700 model exclusively offers Océ MediaSense technology that automatically adjusts the gap between the imaging device and media, for high- quality output without manual adjustments. Océ MediaSense technology provides the ability to grow application volumes for a faster return on investment. The versatile Océ CrystalPoint printing technology offers instant-dry prints with no feathering and excellent fine detail on a variety of media types, from thin, uncoated paper to vinyl. The Onyx workflow support helps you to easily fit the Océ ColorWave 3000 series into your graphic arts workflow.



Océ ColorWave 3500
standalone



Océ ColorWave 3700 with
Océ Folder Express 3011



Océ ColorWave 3700 with
Océ Folder Professional 6013



Océ ColorWave 3700 with
Océ Stacker Select

Océ - A Canon Company

Océ is a global leader in digital imaging, industrial printing and collaborative business services. Océ accelerates new digital print technologies and transforms them into local printing products and services, from creative studios and print shops around the corner to blue-chip multinationals around the globe.

Printing Future

Océ are innovators, creating exceptional technologies, products and services in printing and workflow management. We are focused on accelerating digital imaging technologies and developing high-tech printing products and services.

Number one in printing

Océ is one of the main innovation centres for Canon. We collaborate closely with Canon to develop integral business concepts with a strong foundation in technology. One of Canon's goals is to be the #1 in printing. This gives Océ the strategic imperative and incentive to constantly look for opportunities to improve our organisation, business, culture and brand.

Australia & New Zealand

With over 60 years in Australia, Océ has a long history of providing sales, support and service to printers globally and throughout the Oceania Region.

Océ customers benefit in working with a full-service partner they can count on to help their businesses grow. Océ solutions are specifically designed to enhance the revenue and profit opportunities for service providers by combining hardware with workflow software and the expertise to help companies expand into new markets.



Product

Océ developed systems are designed, manufactured and maintained directly by Océ. We are passionate about our exceptional technology that shapes the way people communicate and work. Océ offers a total solution including hardware, software, imaging supplies, finishing systems, applications expertise, hardware support and financing.



Partnership

At Océ we partner with our customers. Our ambition is to enable our customers and support them through their journey. With a portfolio of leading technology, we are creating products and applications the world has never seen before and we are proud to present this to our clients to grow their business.



Support

Quick telephone access to a trained Océ specialist provides immediate support. If a technician visit is needed, it can be scheduled and any necessary spares ordered for a first-time fix.



Service

Océ invest heavily in the training, processes and tooling required to ensure the Océ service team's knowledge and skills are maintained at a premium level. With one of the largest and most experienced service and support teams in the digital print market, we are ready to provide you with the reliable service you need.

printing future



For information and services

Océ Australia Pty Ltd 1300 363 440 www.oce.com.au